

## STICKERS INTALLATION ON VEHICLE TRANSPORTERS

Complying Arrêté 05/01/2021 R. 313-32-1 of the French road code

From 1<sup>st</sup> of January 2021 all the vehicles with GVW over 3,5t circulating in France, must comply with this mandatory.

The sticker model is as follow



The installation on vehicle transporters can be as follow.

### TRUCK

1. Three stickers are necessary for each vehicle.
2. One sticker per side (on the doors) on the first meter of the vehicle at a height between 0.90 m and 1.50 m.
3. One sticker on the rear of the vehicle on the right of the median longitudinal plane of the vehicle at a height between 0.90 m and 1.50 m. Vehicle transporters are exempted to respect the position on the rear, if technically impossible, but the sticker must be applied anyway.
4. The stickers must not disturb the visibility of the driver and must not cover any element (windows, lights, plates, retro-reflective plates and tapes, speed discs, etc.).
5. Installation examples:



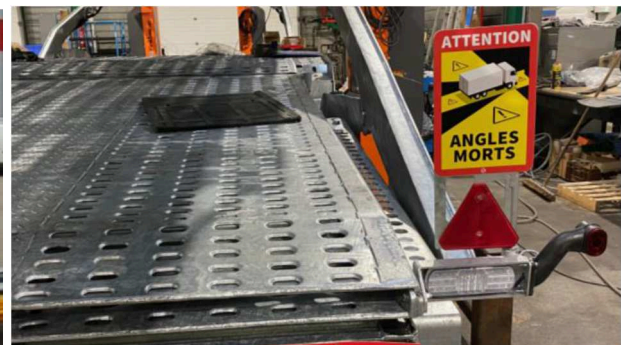
## TRAILER

1. Three stickers are necessary for each vehicle.
2. One sticker per side possibly on the first meter of the vehicle body at a height between 0.90 m and 1.50 m.
3. One sticker on the rear of the vehicle on the right of the median longitudinal plane of the vehicle at a height between 0.90 m and 1.50 m.
4. Vehicle transporters are exempted to respect the position on the side and on the rear, if technically impossible, but the stickers must be applied anyway.
5. The stickers must not disturb the visibility of the driver and must not cover any element (lights, plates, retro-reflective plates and tapes, speed discs, etc.).
6. Installation examples:





# ROLFO







## SEMITRAILER

1. Three stickers are necessary for each vehicle.
2. One sticker per side possibly on the first meter backward the king pin at a height between 0.90 m and 1.50 m.
3. One sticker on the rear of the vehicle on the right of the median longitudinal plane of the vehicle at a height between 0.90 m and 1.50 m.
4. Vehicle transporters are exempted to respect the position on the side and on the rear, if technically impossible, but the stickers must be applied anyway.
5. The stickers must not disturb the visibility of the driver and must not cover any element (lights, plates, retro-reflective plates and tapes, speed discs, etc.).
6. Installation examples:



## TRACTORS

1. Three stickers are necessary for each vehicle.
2. One sticker per side (on the doors) on the first meter of the vehicle at a height between 0.90 m and 1.50 m.
3. One sticker on the rear of the cabin on the right of the median longitudinal plane of the vehicle at a height between 0.90 m and 1.50 m.
4. The stickers must not disturb the visibility of the driver and must not cover any element (windows, lights, plates, retro-reflective plates and tapes, speed discs, etc.).